



# Y11 Transition to Y12

# Health and Social Care

Extended Diploma (Triple)

UNIT 3 – ANATOMY AND PHYSIOLOGY  
PRE-LEARNING

# Specification / Context

- ▶ You can find the specification for the course at:  
<https://qualifications.pearson.com/en/qualifications/btec-nationals/health-and-social-care-2016.html>
- ▶ Make sure that you select the correct course from the specification drop down box before selecting download:

Specification Course materials Published resources News

Specification Extended Diploma

Main course in a programme of study, providing wider-ranging coverage of the sector. Supports progression to higher education or apprenticeships in health and social care, health sciences or employment.

**Qualification Summary**  
Title: **Pearson BTEC Level 3 National Extended Diploma in Health and Social Care**  
Qualification number: **601/7198/4**  
Guided learning hours: **1080**

**DOWNLOAD**  
PDF | 2.1 MB

- Find the unit information within the specification for Unit 3 Anatomy and Physiology
- Read through this so that you are familiar about the content of the unit and how you will be assessed. We will go through this thoroughly at the beginning of the course.

# About the unit

- ▶ This is a 1 ½ hour written examination, which you will sit in January 2021.
- ▶ You are allowed to have 3 attempts at the examination. Examinations can be sit in January or in June.
- ▶ The unit is 120 Guided Learning Hours.
- ▶ You will learn about the structure and organisation of the human body including cells, tissues and organs, energy and genetics. You will learn in detail the structure and function of 10 body systems and disorders that are associated with each. Finally you will learn about medical research including clinical trials, epidemiological studies and data/statistics.

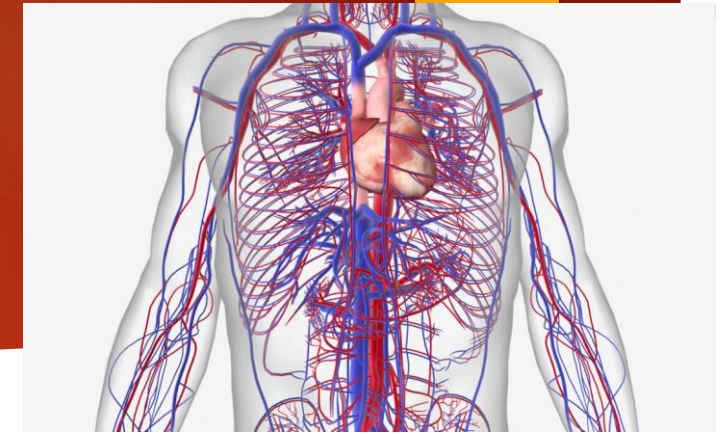
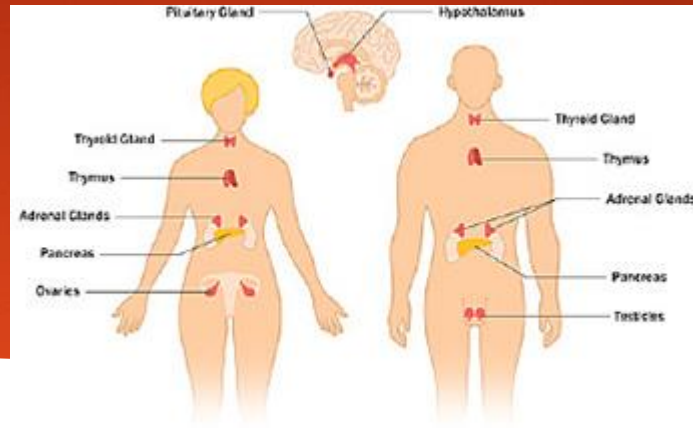
# Cells and Organelles

Use this website link to recap cells and organelles. You will have looked at these in biology at GCSE. If you register you can do the tests too.

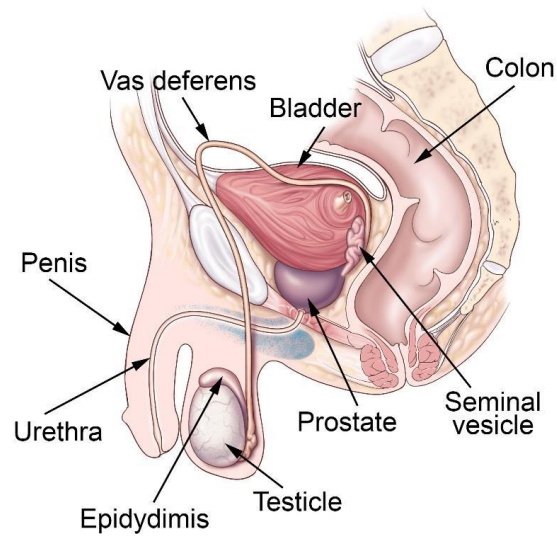
<https://www.s-cool.co.uk/a-level/biology>

We are only concerned with human (animal) cells so ignore the information on plants .. unless you are interested!

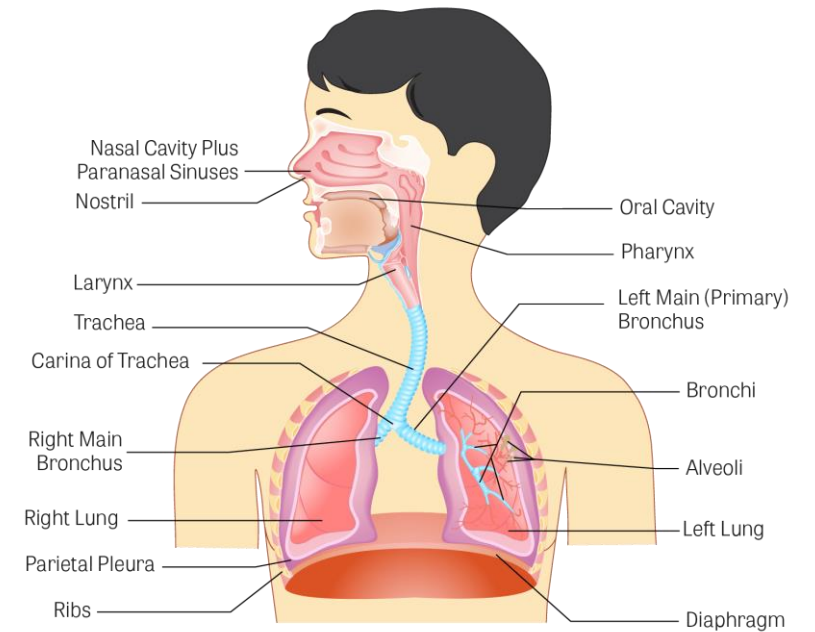
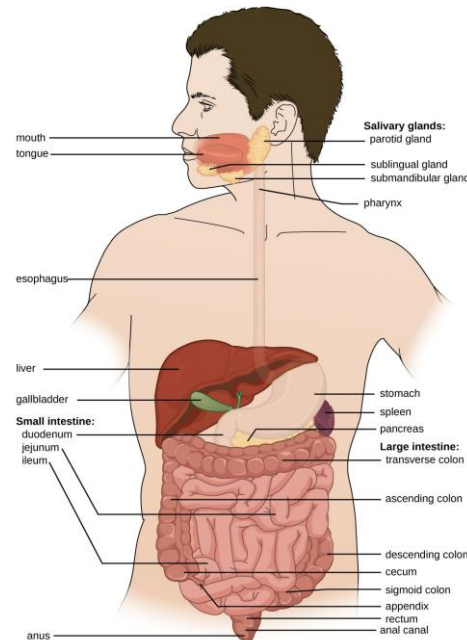
# Body Systems



► How many body systems can you name?



© CCF 2016



# Build a body

- ▶ Get some BIG paper or stick about 10 sheets of A4 together.
- ▶ Either ask someone to draw around the outline of your body or sketch a body.
- ▶ Add to your picture (researching if needed) the following organs:
  - ▶ Liver / Stomach / Heart / Lungs / Colon / Kidneys / Bladder / Ovaries or Testes / Pancreas / Brain / Duodenum / Ileum / Uterus / Skin
- ▶ Do you know any keywords associated with each organ? Write them nearby.

# Disorders

- ▶ From the list in the box, research at least 2 disorders.
- ▶ In your research notes, include:
  - ▶ Which body system and organs does the disorder effect?
  - ▶ What causes the disorder
  - ▶ What symptoms and complications are associated with it?
  - ▶ How is it treated?

## **Disorders (Choose at least 2):**

- ▶ Diabetes Insipidus
- ▶ Hodgkin's Disease
- ▶ Hydrocele
- ▶ Coeliac Disease
- ▶ Hepatitis
- ▶ Muscular Dystrophy
- ▶ Parkinson's Disease
- ▶ Dementia
- ▶ Endometriosis
- ▶ Pneumonia
- ▶ Stroke

# Reading List

## Books:

- ▶ BTEC National Health and Social Care Student Book 1: For the 2016 specifications
- ▶ Ross & Wilson Anatomy and Physiology in Health and Illness by Grant & Waugh

## Websites:

- ▶ [https://www.youtube.com/playlist?list=PL8dPuuaLjXtOAKed\\_MxxWBNaPno5h3Zs8](https://www.youtube.com/playlist?list=PL8dPuuaLjXtOAKed_MxxWBNaPno5h3Zs8)
- ▶ <https://opentextbc.ca/anatomyandphysiology/chapter/1-1-overview-of-anatomy-and-physiology-2/>
- ▶ <https://www.s-cool.co.uk/a-level/biology>